

Assembly Instructions after Remanufactured

Cybex 770AT Total Body Arc Trainer w/E3 Console



Unit is Partly Assembled. Refer to Pages 32-39 for assembly of the remanufactured unit


770AT Assembly Procedure

Tools Required

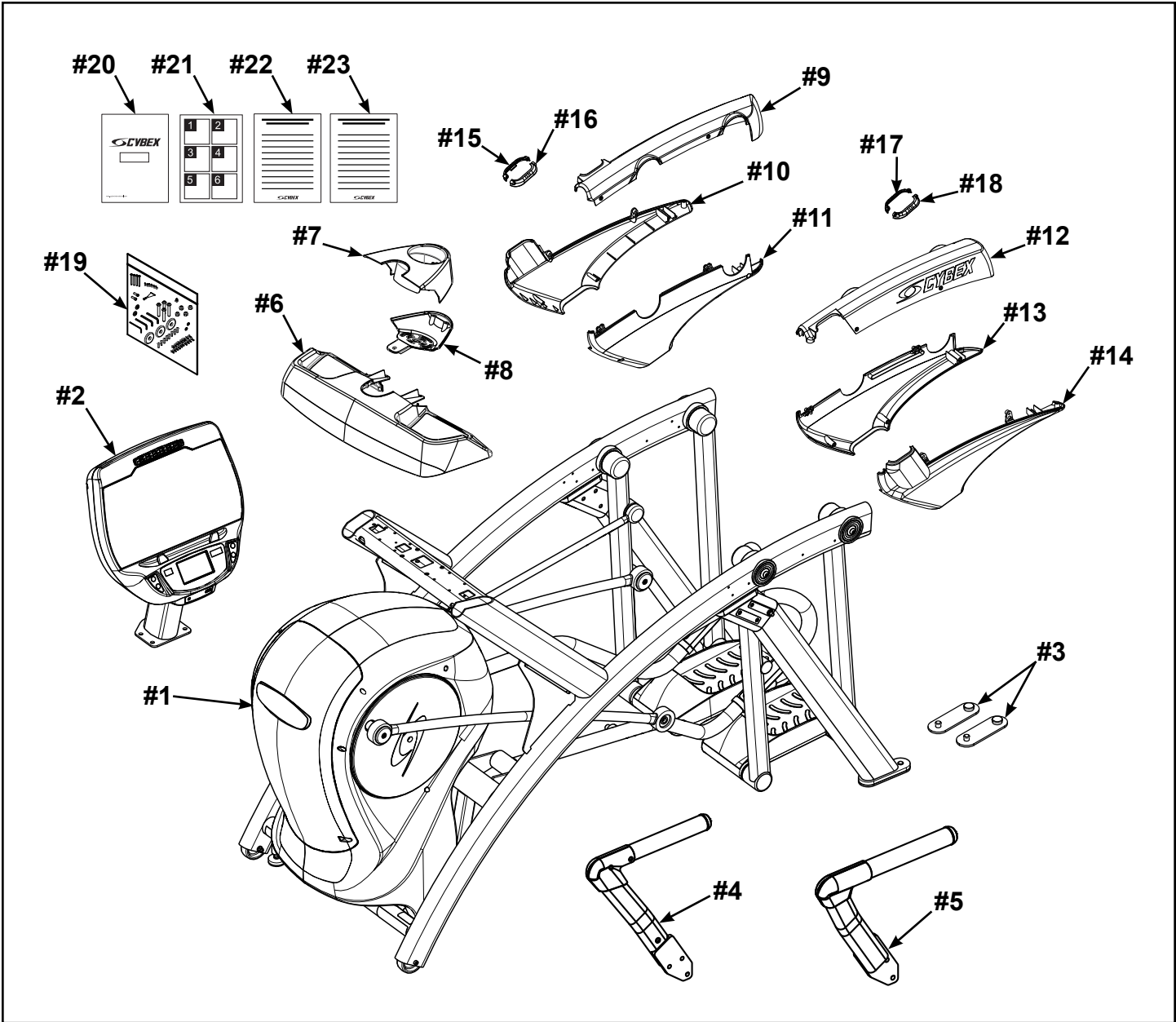
- Phillips screwdriver
- Stubby Phillips screwdriver
- 3/16" Allen wrench (supplied)
- 7/32" Allen wrench (2) (supplied)
- 9/16" Open end wrench (2)

The words "left" and "right" denote the user's orientation.

Two people will be required for this procedure.

 Read and understand all instructions thoroughly before assembling this unit. Check all items carefully. If there is damage, see the Customer Service section of this manual for proper procedure to return, replace, or reorder parts.

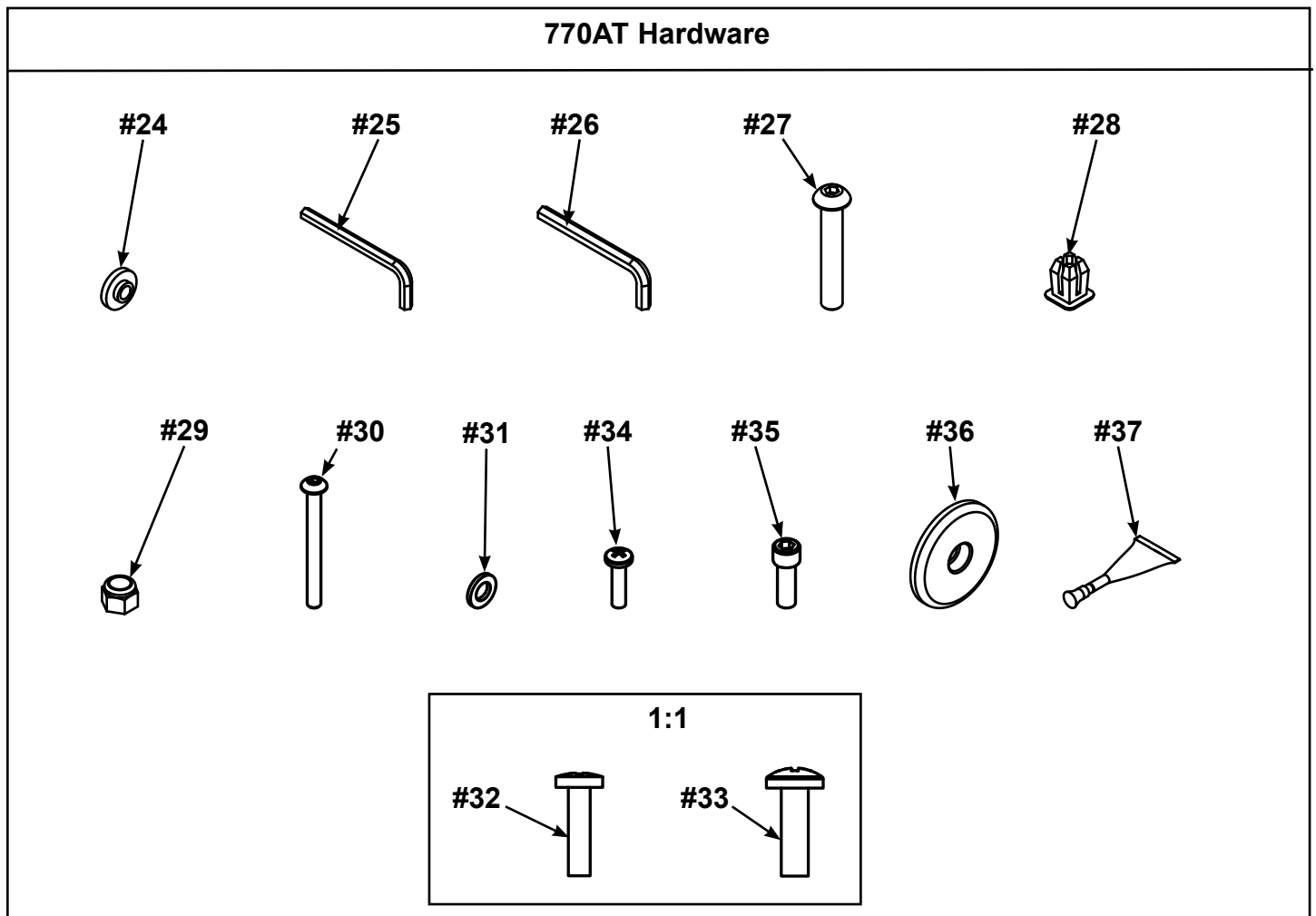
Item	Quantity	Part Number	Description
1	1	Varies	Base assembly
2	1	Varies	Console assembly
3	2	12090-322	Foot pad
4	1	NA	Handle, Right
5	1	NA	Handle, Left
6	1	770A-316	Base, Accessory tray
7	1	770A-317	Cover, Top, Accessory tray
8	1	770A-318	Cover, Bottom, Accessory tray
9	1	770A-322	Cover, Rear, Top, Right
10	1	770A-323	Cover, Rear, Outer, Right
11	1	770A-324	Cover, Rear, Inner, Right
12	1	770A-319	Cover, Rear, Top, Left
13	1	770A-321	Cover, Rear, Inner, Left
14	1	770A-320	Cover, Rear, Outer, Left
15	1	770A-341	Collar, Outer, Right
16	1	770A-340	Collar, Inner, Right
17	1	770A-334	Collar, Inner, Left
18	1	770A-335	Collar, Outer, Left
19	1	NA	Hardware pack
20	1	5770-X	Owner's Manual
21	1	770AT-316	Assembly poster
22	1	770A-415	Commercial Arc warranty sheet
23	1	770A-416	Consumer Arc warranty sheet

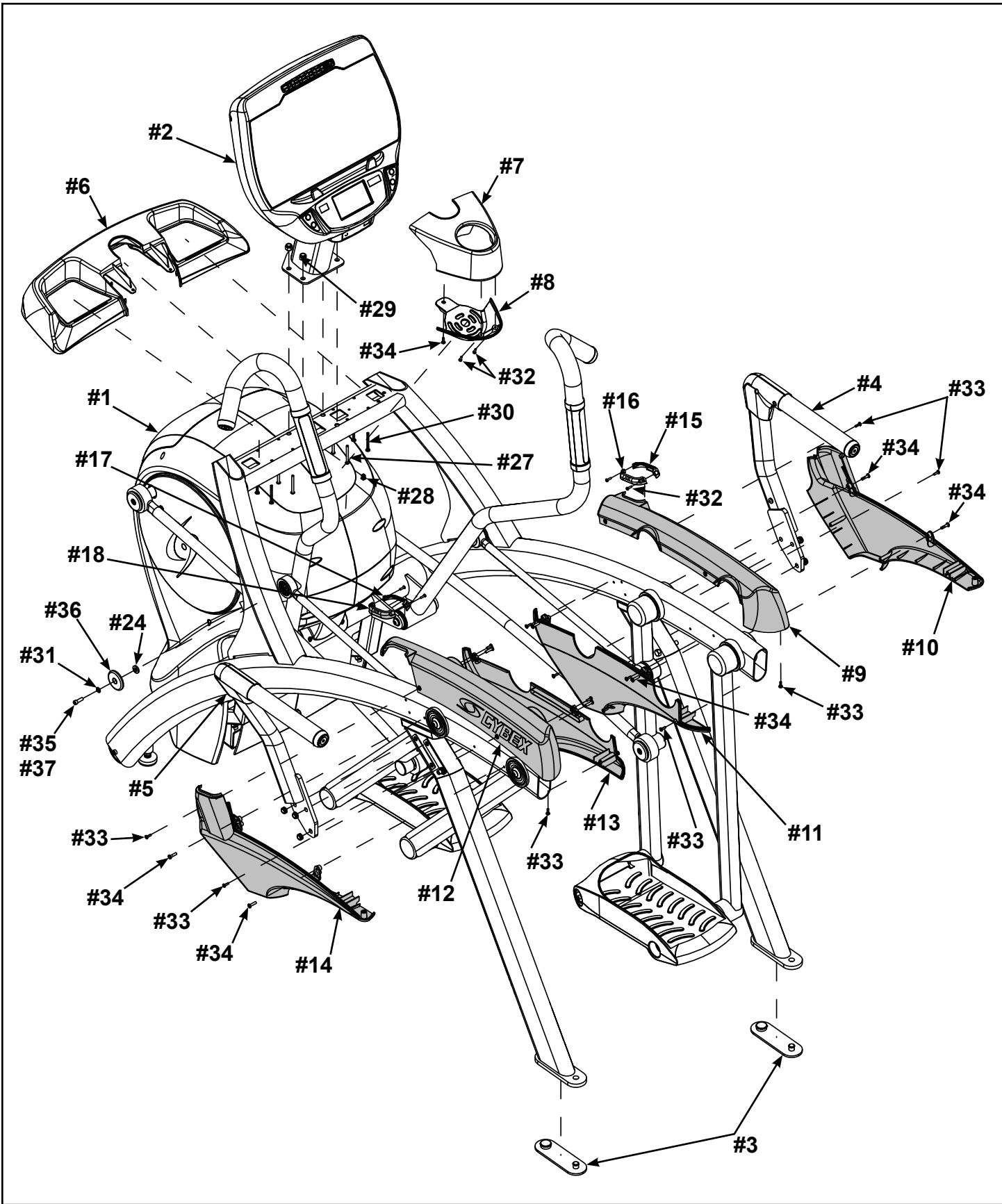


Verify contents of hardware pack

See hardware pack listings and hardware pack contents. See **Customer Service** for contact information if any parts are missing.

Item	Quantity	Part Number	Description
24	2	600A-311	Flange Spacer
25	1	BK030201	3/16" Allen Wrench
26	2	BK030204	7/32" Allen Wrench
27	4	HC700428	BHSCS .375-16 x 2.25"
28	1	HF540200	Grommet, Nylon
29	4	HN704901	Locknut, .375-16 Nylon
30	4	HT592526	Tap Sc 10-12 x 2.00 Pn Hd Phil
31	2	HS307601	Washer, Flat .281 ID x .500 OD x .062"
32	6	HT532512	Screw, Pan Head Phillips, #6 x .50"
33	19	HT552512	Screw, Pan Head Phillips, 8-16 x .50"
34	8	HT572515	Screw, Pan Head Phillips, 10-24 x .75"
35	2	HX622815	SHCS .250-20 UNC-3A SS
36	3	PL-16535	Linkage Rod Cap 2.00 OD (1 extra)
37	1	YA000201	Loctite



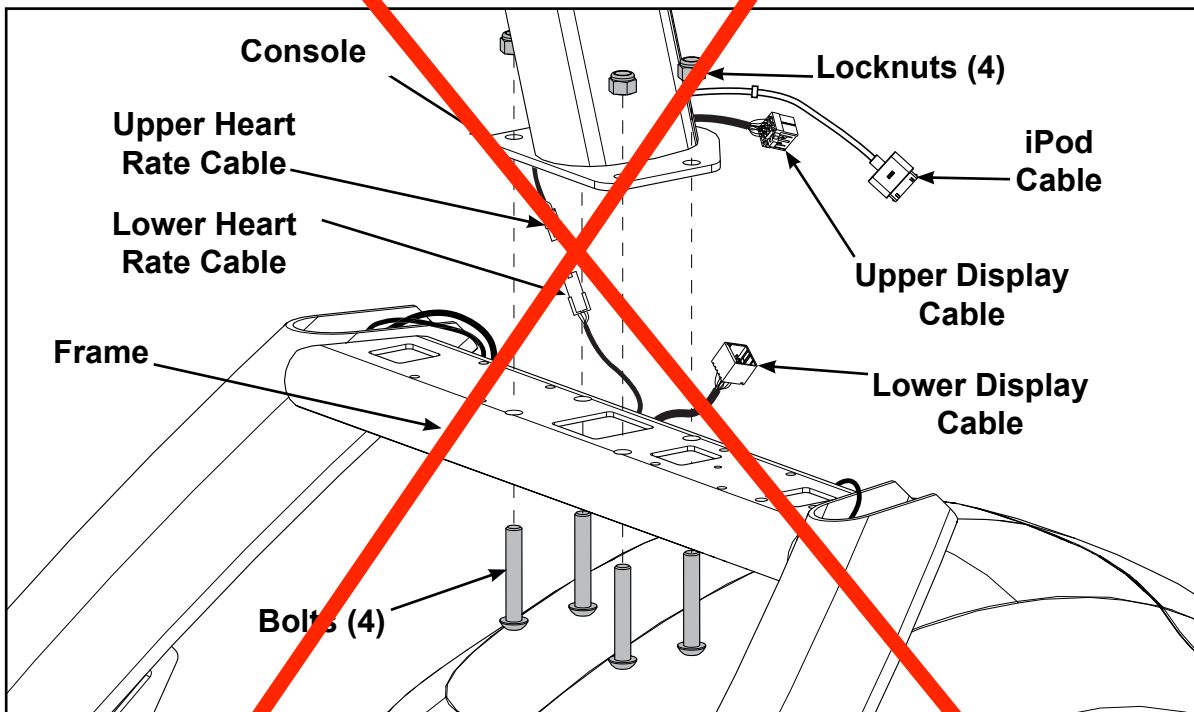


Lift and move unit

1. Remove large bolts and shipping supports. Keep package material on linkage arms at this time. This will protect the paint from scratching during assembly.
2. Grasp each rear support leg firmly and lift with one person on each side.
3. Lift the lower rear support legs using proper lifting methods so the front transport wheels are able to roll on floor.
4. Move unit to intended location.
5. Lower rear support legs.

Attach 770AT console assembly.

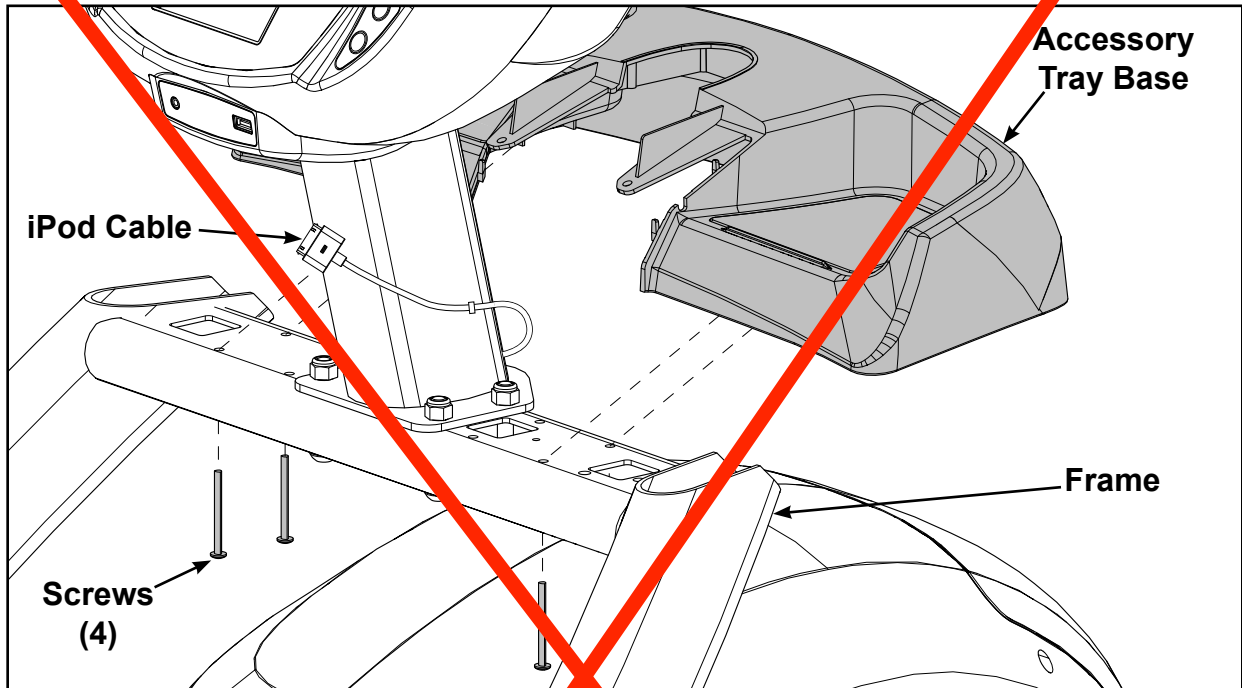
1. Plug the upper heart rate cable into the lower heart rate cable.



2. Plug the upper display cable into the lower display cable.
3. Place the console into position on the frame. Do not pinch cables while lowering the console.
4. Insert (from underneath) the four bolts into the frame and console.
5. Thread the four locknuts onto the bolts by hand.
6. Tighten the four bolts and locknuts with a 7/32" Allen wrench and a 9/16" open-end wrench.

Install accessory tray base

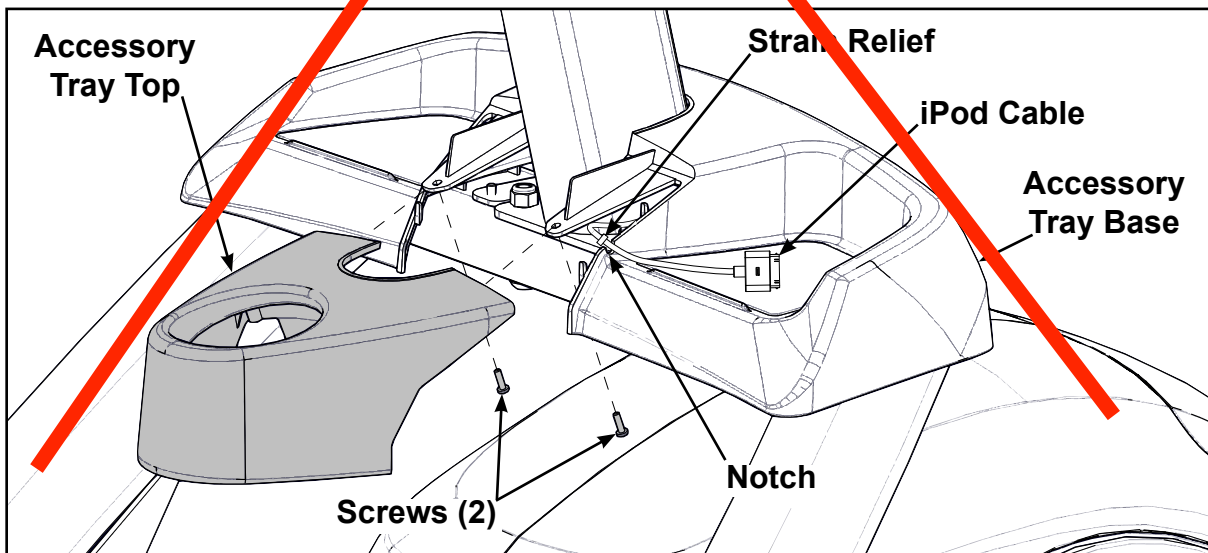
1. Place the accessory tray in position on the frame and route the iPod cable towards the back of the unit.



2. Install the four screws using a Phillips screw driver.

Install accessory tray top

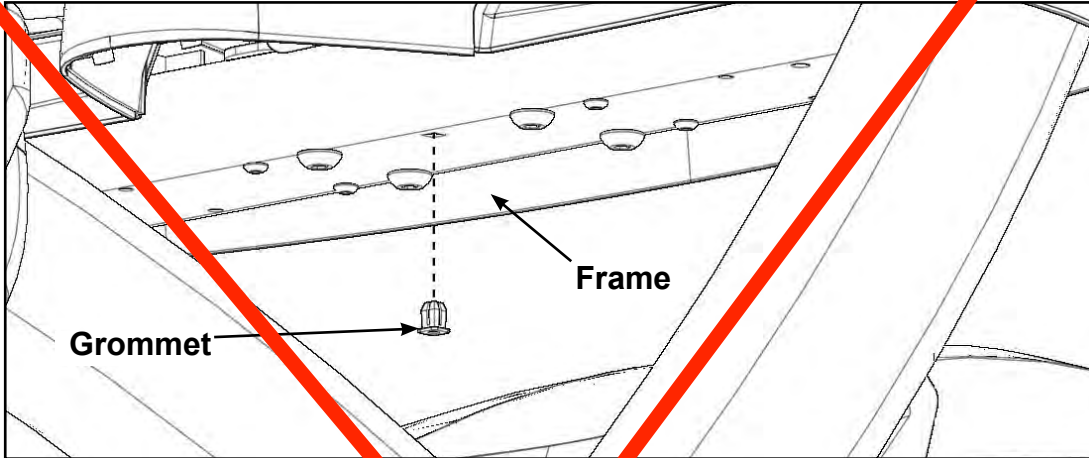
1. Place the accessory tray top in position on the accessory tray base and route the iPod cable through the notch in the accessory tray. Place the iPod cable strain relief on the inside edge of the notch in the accessory tray.



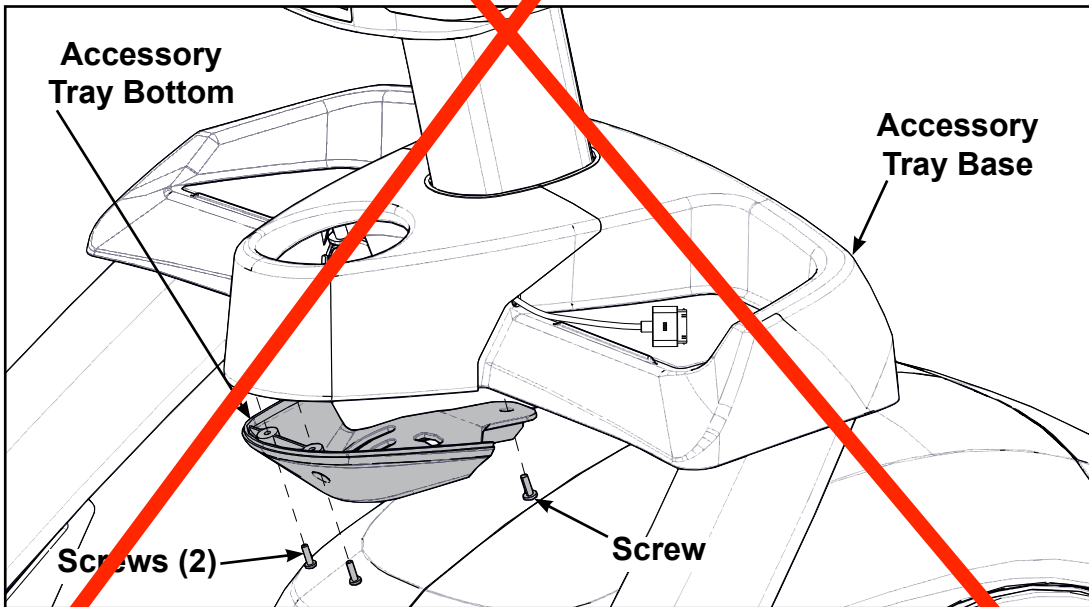
2. Install the two screws using a Phillips screwdriver.

Install accessory tray bottom

Install the grommet to the frame.

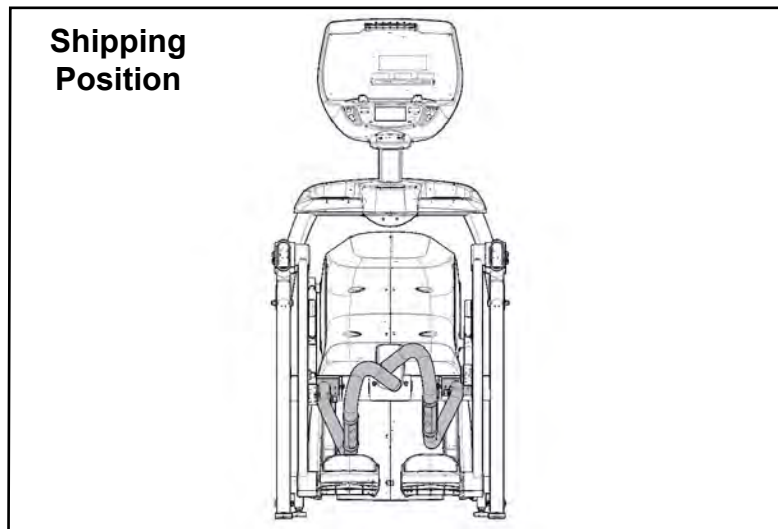


Install the accessory tray bottom to the accessory tray base with three screws using a Phillips screwdriver.

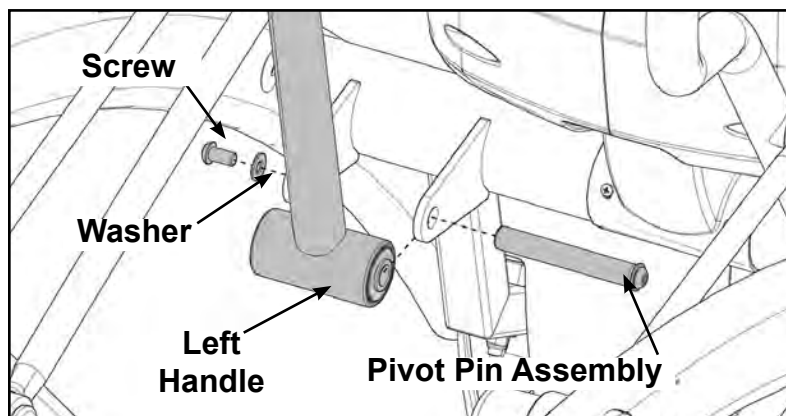


Remove left and right handle assembly

The left and right handle assemblies are shipped in rotated positions. The handle assemblies must be removed and rotated 180 degrees for proper setup and assembly.

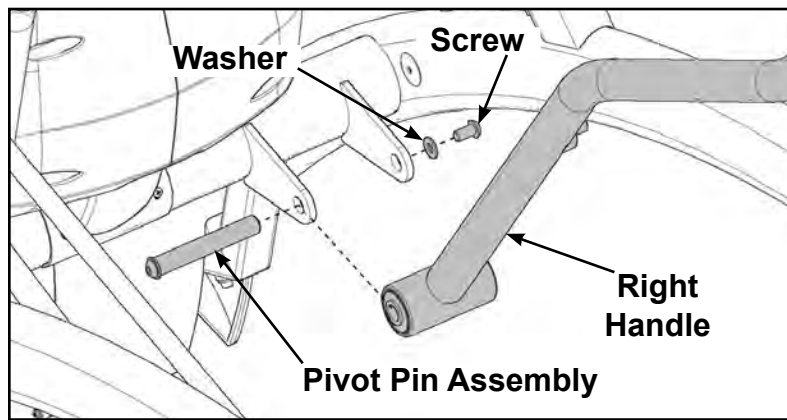


1. Remove a screw and washer from the left handle assembly using two 7/32" Allen wrenches.



2. Slide pivot pin assembly out and remove left handle assembly.
3. Rotate left handle assembly 180 degrees.
4. Apply Loctite to threads inside the pivot pin and screw.
5. Place left handle assembly in position and slide pivot pin assembly back in place.
6. Install the screw and washer to the left handle assembly using two 7/32" Allen wrenches.

7. Remove a screw and washer from the right handle assembly using two 7/32" Allen wrenches.



8. Slide pivot pin assembly out and remove right handle assembly.

9. Rotate right handle assembly 180 degrees.

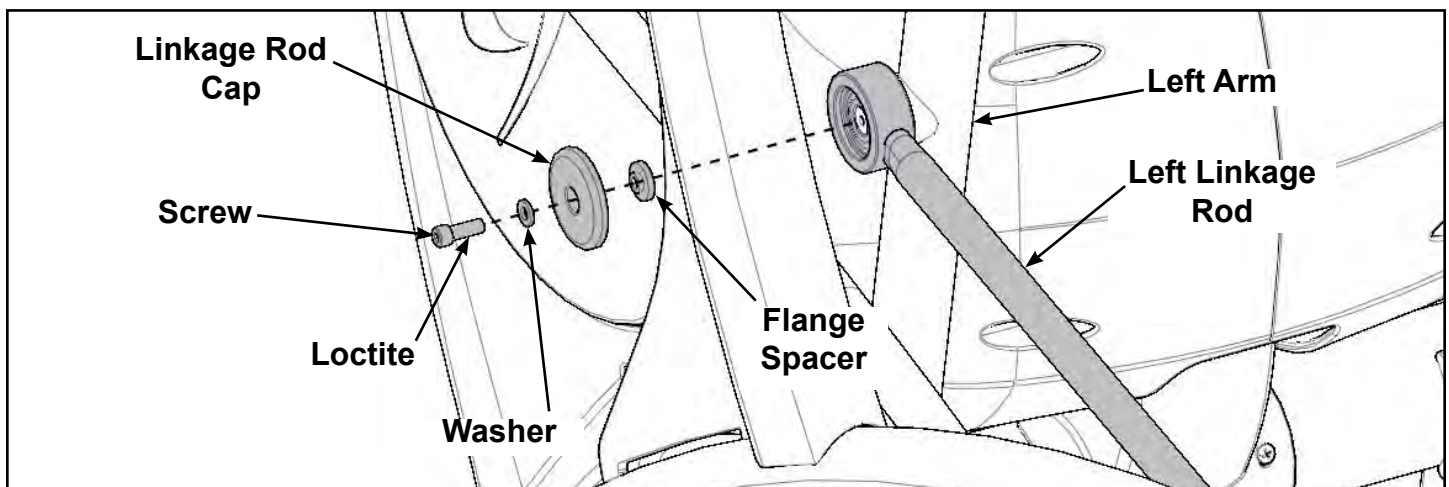
10. Apply Loctite to threads inside the pivot pin and screw.

11. Place right handle assembly in position and slide pivot pin assembly back in place.

12. Install the screw and washer to the right handle assembly using two 7/32" Allen wrenches.

Install the left linkage rod

1. Pivot left handle assembly up and slide left linkage rod onto left arm.



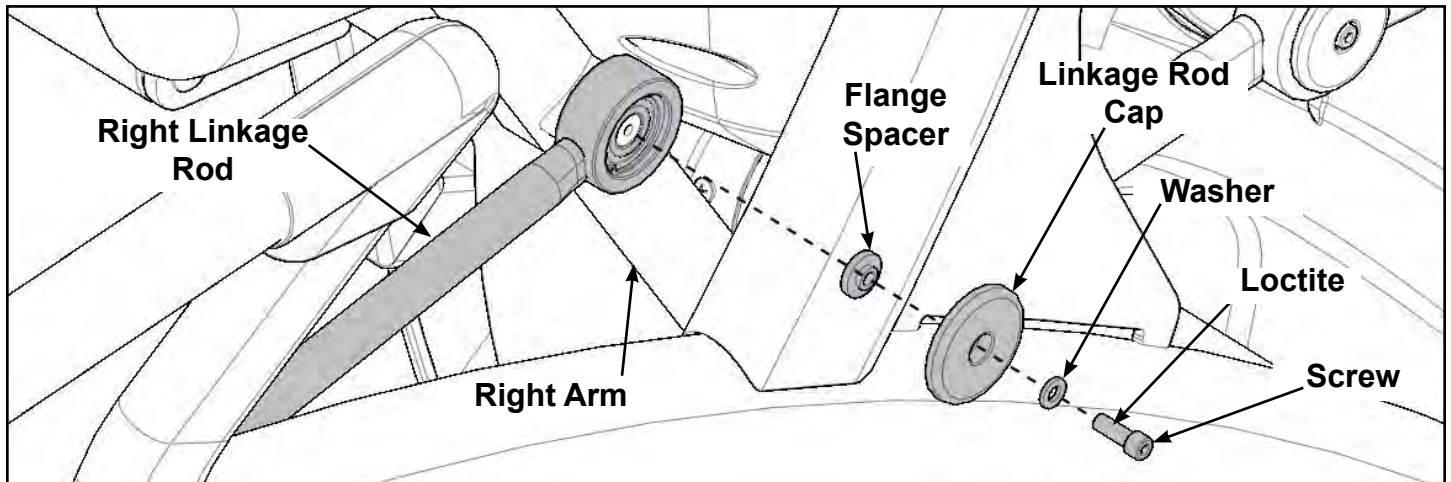
2. Place a drop of Loctite onto the screw.

3. Install the screw, washer, linkage rod cap, and flange spacer using a 3/16" Allen wrench.

4. Tighten screw to a minimum of 90 in/lbs.

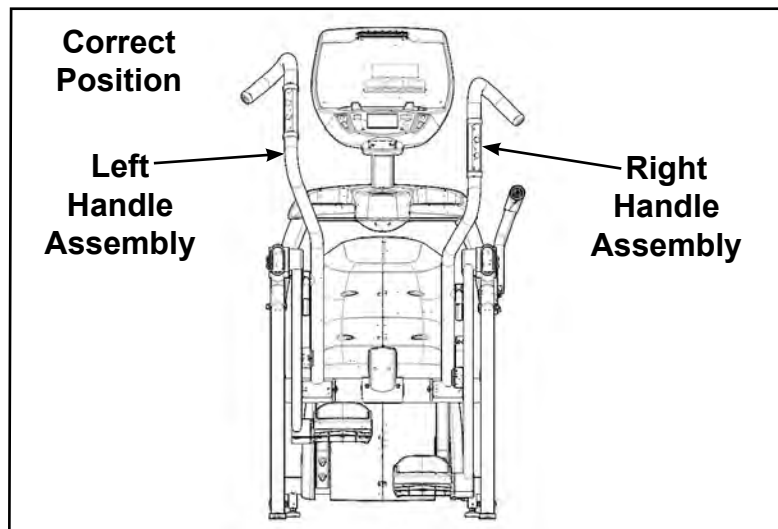
Install right linkage rod

1. Pivot right handle assembly up and slide right linkage rod onto right arm.



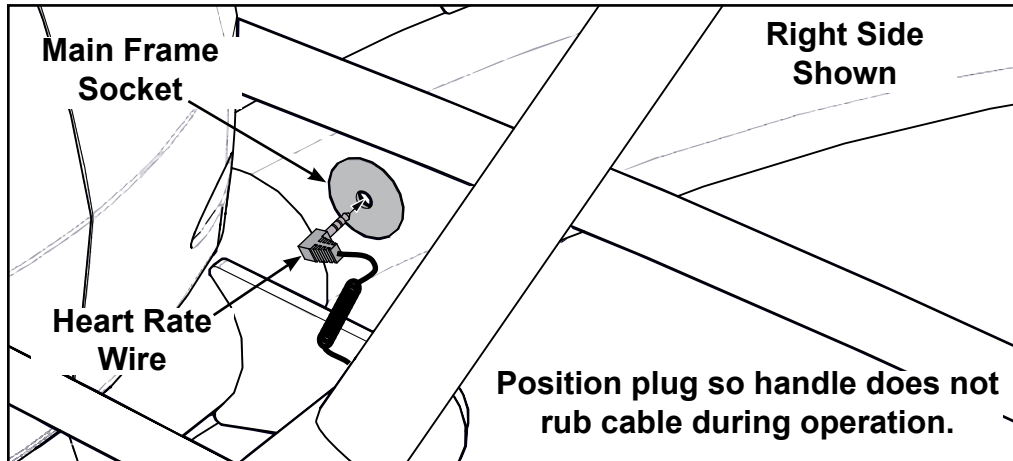
2. Place a drop of Loctite onto the screw.
3. Install the screw, washer, linkage rod cap, and flange spacer using a 3/16" Allen wrench.
4. Tighten screw to a minimum of 90 in/lbs.

Verify handle assemblies are now installed in the correct position.



Connect contact heart rate cable

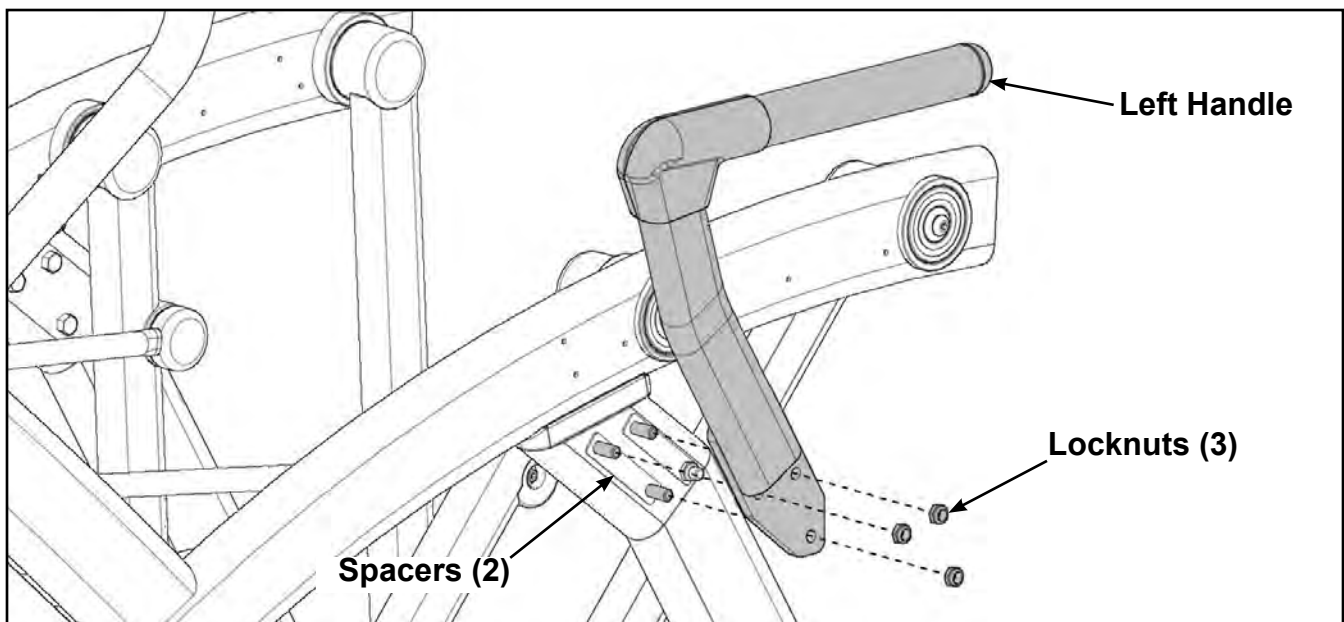
1. Plug right heart rate cable into main frame socket.



2. Plug left heart rate cable into main frame socket.

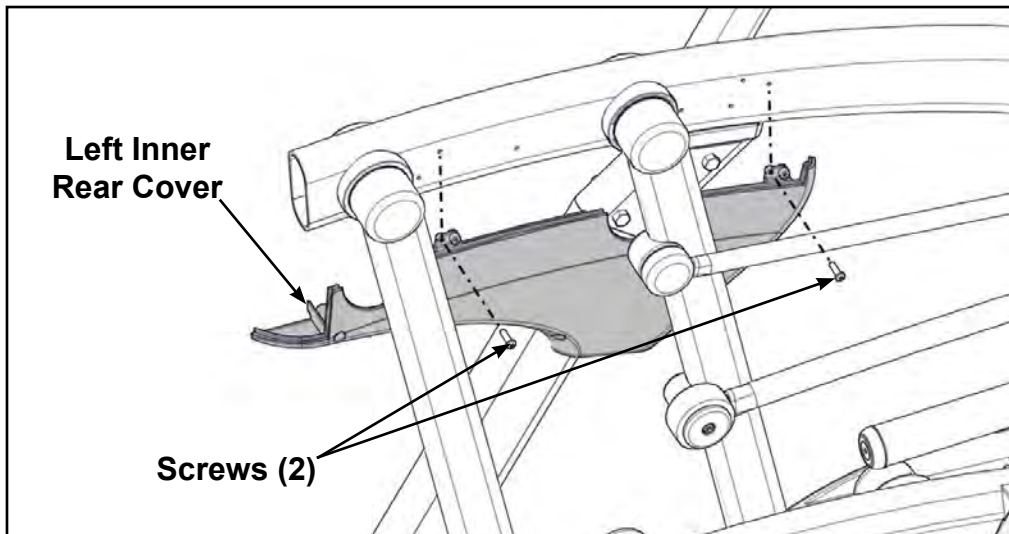
Install handrails.

1. Remove three locknuts from the left support leg using two 9/16" open end wrenches. Keep the two spacers in place.

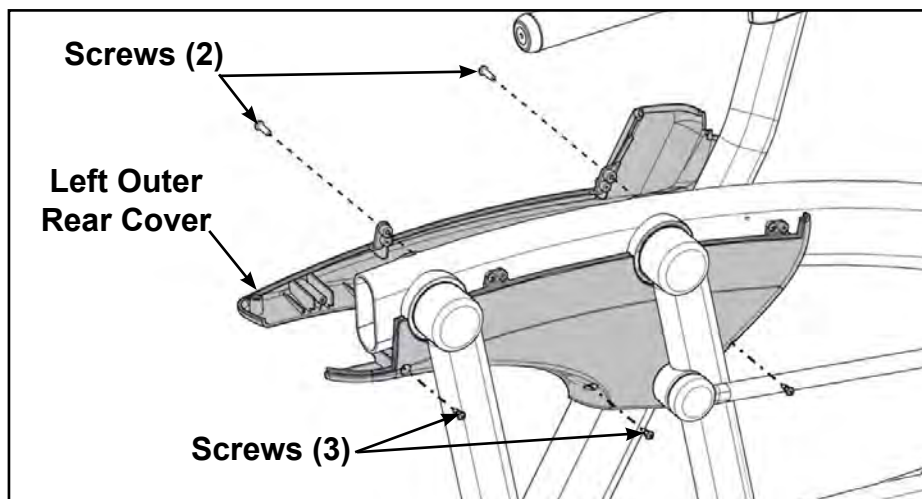


2. Install the left handle and three locknuts using two 9/16" open end wrenches.

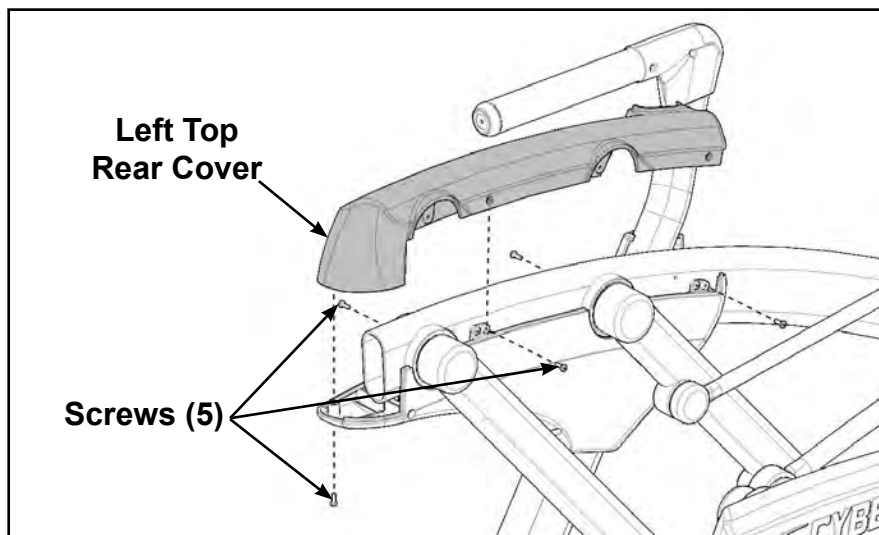
3. Install the left inner rear cover with two screws using a Phillips screwdriver.



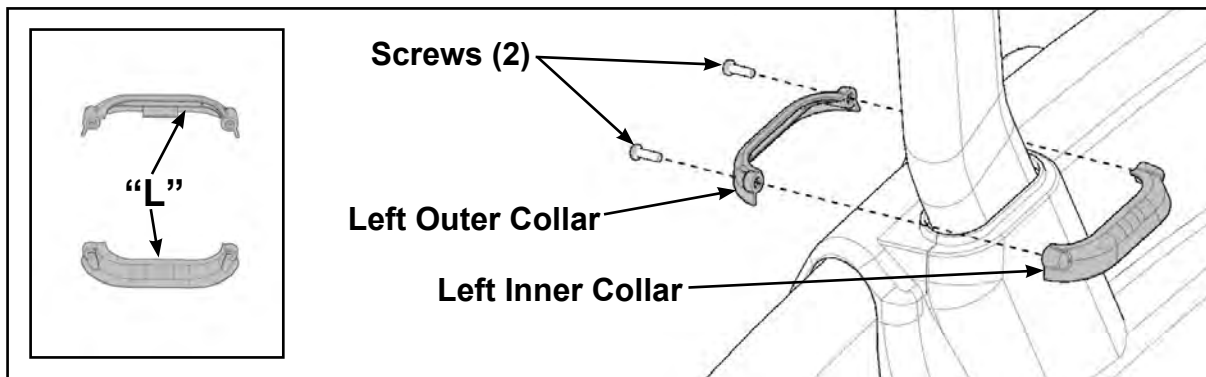
4. Install the left outer rear cover with five screws using a Phillips screwdriver.



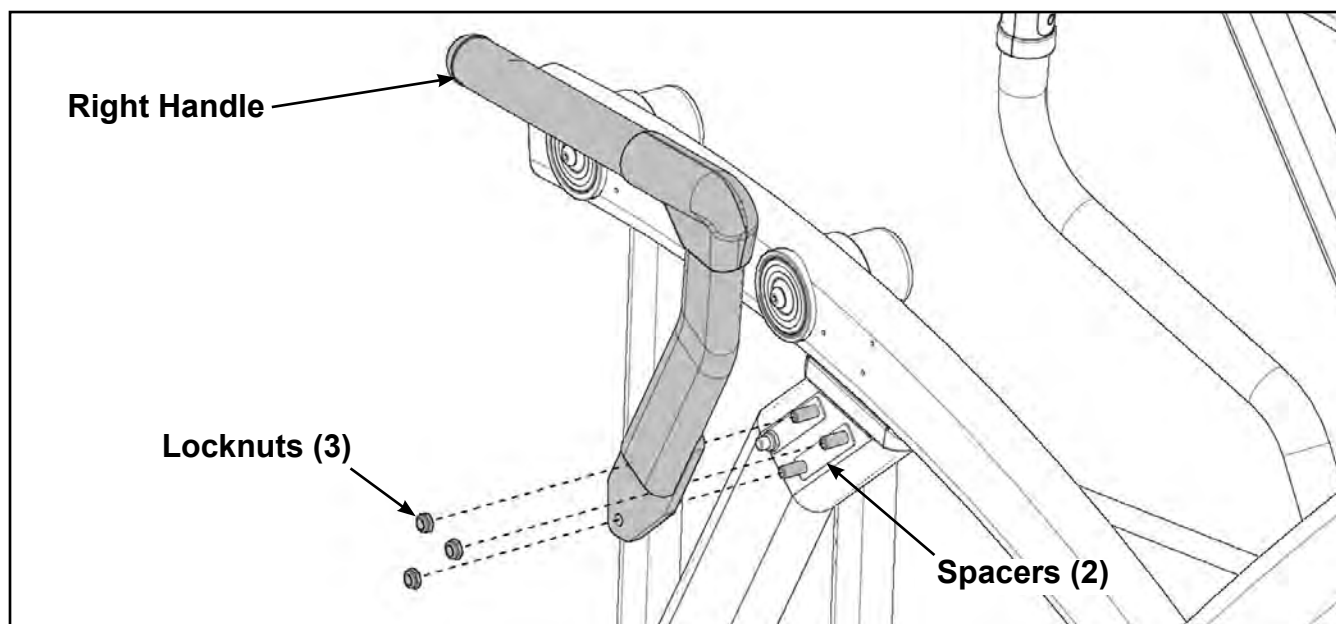
5. Install the left top rear cover with five screws using a Phillips screwdriver.



6. Install the left inner and outer collars with two screws using a Phillips screwdriver. Collars are marked with an “L” on the inside and have a left and right side.

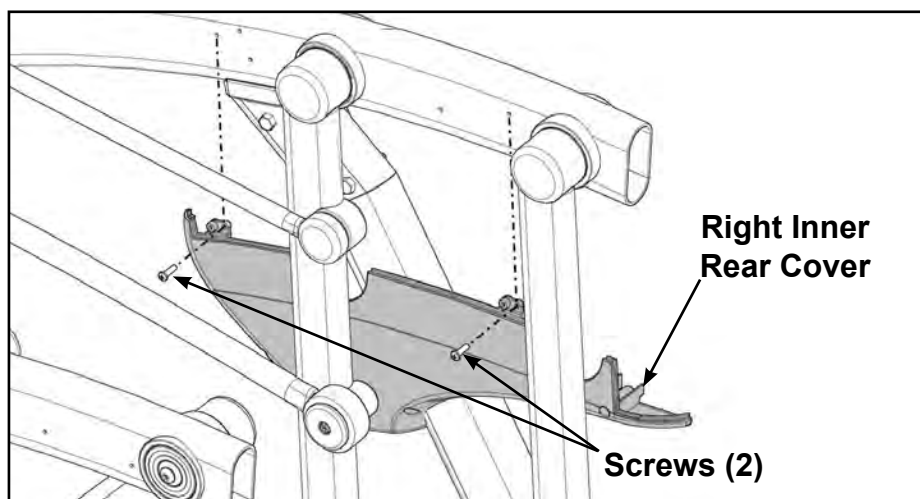


7. Remove three locknuts from the right support leg using two 9/16" open end wrenches. Keep the two spacers in place.

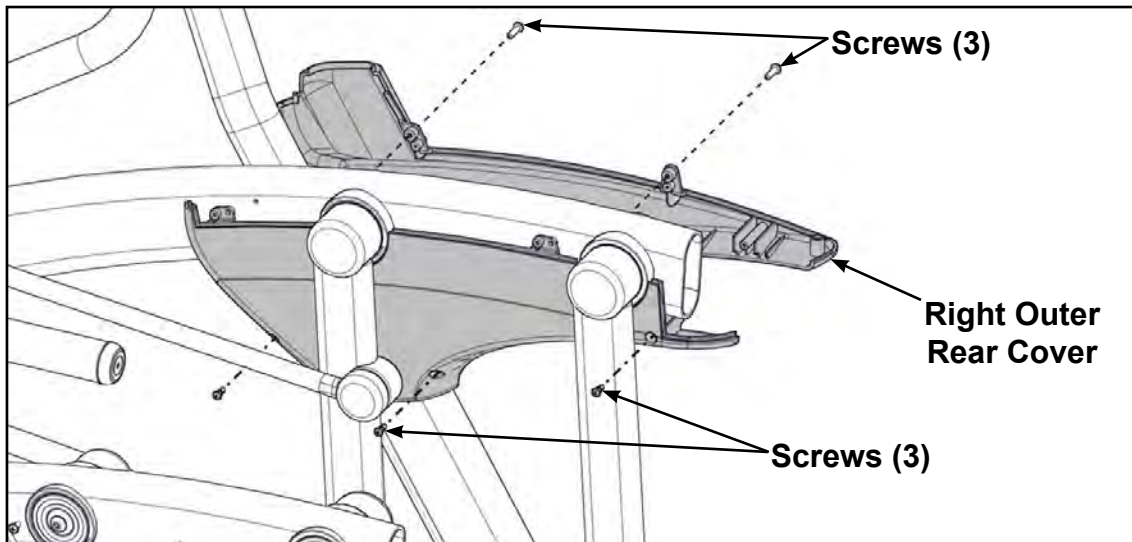


8. Install the right handle and three locknuts using two 9/16" open end wrenches.

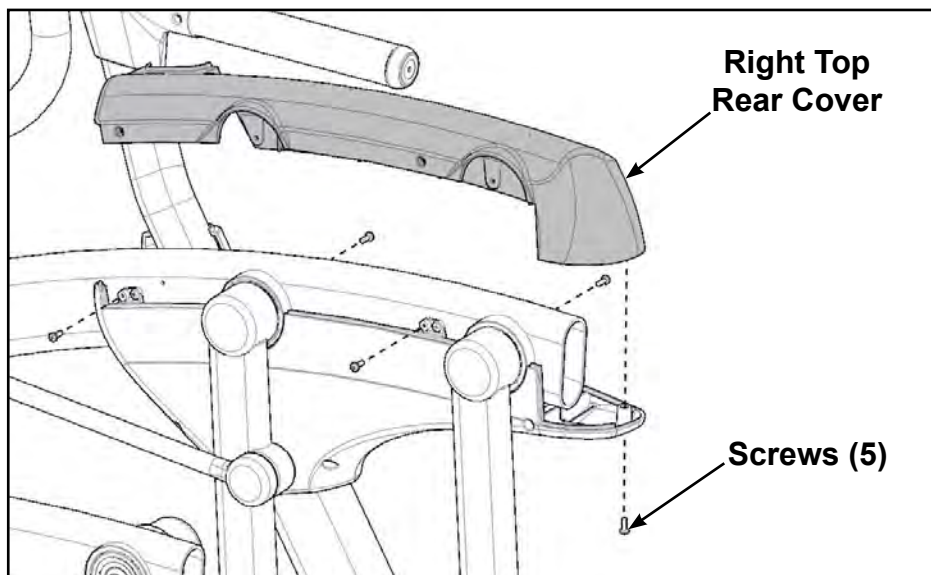
9. Install the right inner rear cover with two screws using a Phillips screwdriver.



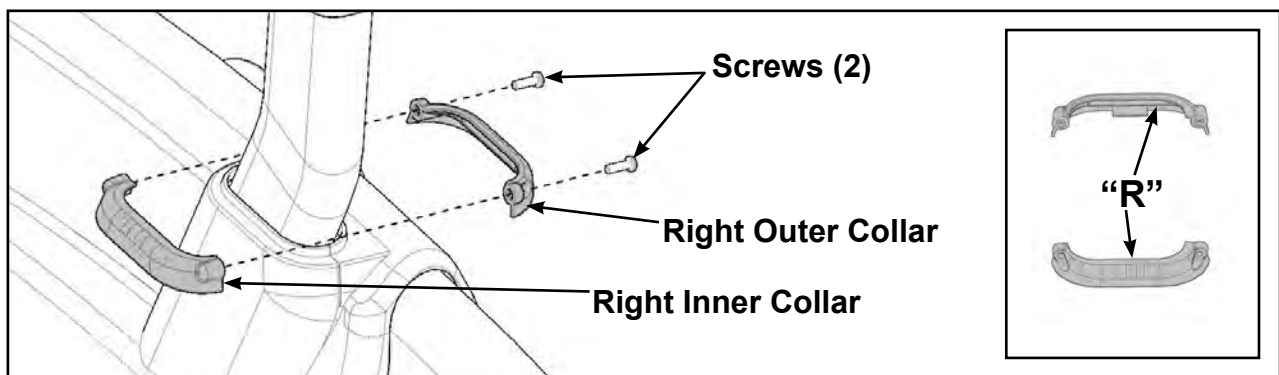
10. Install the right outer rear cover with five screws using a Phillips screwdriver.



11. Install the right top rear cover with five screws using a Phillips screwdriver.

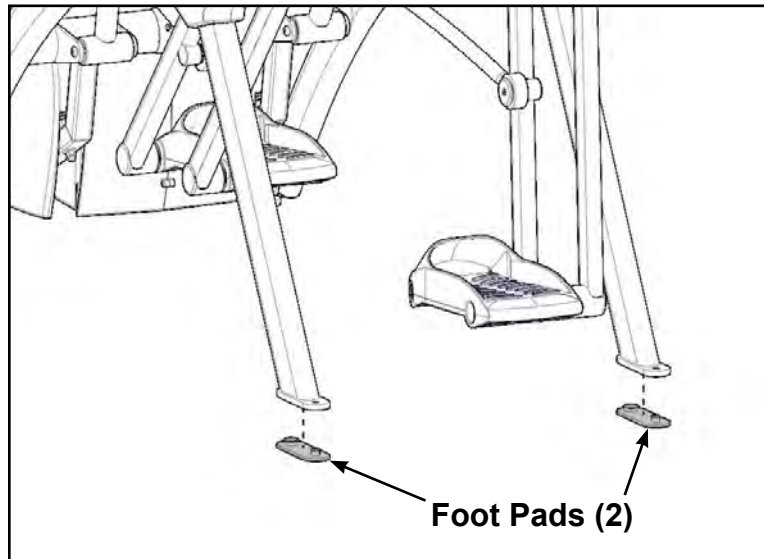


12. Install the right inner and outer collars with two screws using a Phillips screwdriver. Collars are marked with an "R" on the inside and have a left and right side.



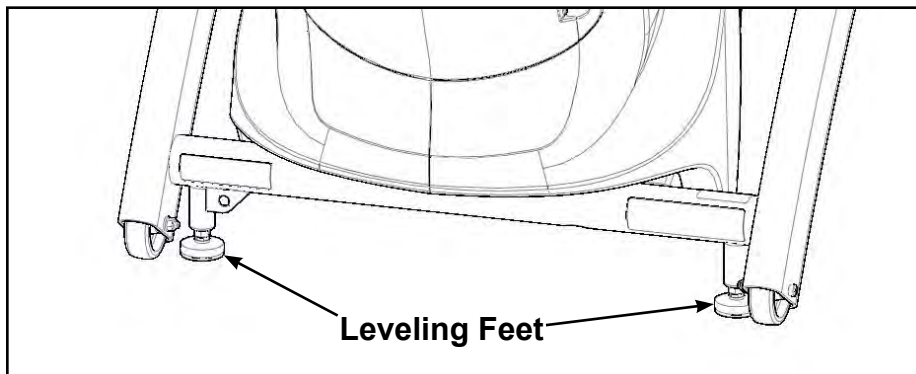
Attach foot pads

Have one person lift the unit while a second person places a foot pad under each of the two back feet.



Level unit

Confirm unit is on a level surface. If not, use a 9/16" open-end wrench to adjust the leveling feet up or down.



Visually inspect unit

1. Carefully remove any package material from arms and rest of unit.
2. Carefully examine the unit to ensure assembly is correct and complete.